



FOUNDATION FOR EXCELLENCE
Nurturing Brilliance ★ Transforming Generations

ANNUAL REPORT FY 2018-19

NURTURING BRILLIANCE,
TRANSFORMING GENERATIONS



Foundation for Excellence India Trust
No. 840, MHT House, 1st Floor
5th Main, Indiranagar 1st Stage
Bengaluru 560 038
Phone: +91 (080) 2520 1925
Email: india_support@ffe.org

Contents

| | |
|--|-----------|
| <u>Message from the Managing Trustee</u> | 3 |
| <u>Mission and Impact</u> | 4 |
| <u>Programs and Activities in FY 2018-19</u> | 5 |
| <u>Outreach Activities in FY 2018-19</u> | 9 |
| <u>Awards & Recognition</u> | 11 |
| <u>Inspiring change – FFE Scholars</u> | 12 |
| <u>Performance in FY 2018-19</u> | 15 |
| <u>Our Supporters</u> | 18 |
| <u>Composition of the Board</u> | 20 |
| <u>Distribution of staff</u> | 20 |
| <u>Auditor's Report</u> | 21 |
| <u>Income & Expenditure for the FY 2018-19</u> | 22 |
| <u>Balance Sheet as at 31st March 2019</u> | 23 |
| <u>Scholarship Program Statistics</u> | 29 |

Message from the Managing Trustee

The Foundation For Excellence (FFE) in partnership with The Foundation For Excellence India Trust (established in 2003) has brought about positive change in the lives of atleast 20,000 individuals directly, through its flagship Scholarship Program, an established financial assistance program that has transformative potential.

FFE's Founders- Dr. Prabhu Goel and Mrs. Poonam Goel, established FFE in 1994 with the vision to award scholarships to academically gifted students, to enable them to make a leap towards professional education- pursuing Engineering and Medical degrees in India, despite financial hardships, thereby transforming their lives in a single generation.

During FY 2018-19, FFE awarded scholarships amounting to Rs 23.70 crores to 5,422 scholars including Engineering and Medical students. While the organization's scholarship program has been impactful over the last 24 years, it became evident that assisting students, to acquire necessary work-skills while in college would increase their chances of employability, and hence a change in their economic status on employment. The 'Professional Development Program' / 'Wrap Around Skills Program' was launched with this specific goal, to make employability and/or Entrepreneurship or other opportunities within the ambit of 'ACHIEVABLE GOALS' for Engineering scholars. FFE is grateful to The Michael and Susan Dell Foundation (MSDF) for their generous grant that has supported the training program for all FFE Engineering scholars. The 'Skills Program' provides opportunities for soft- skills training as well as technical certification courses for FFE scholars while 'FFE's Mentoring Program', augments the 'Skills Training Program' with

skills for employability. With industry mentors partnering with FFE to provide guidance and help to scholar mentees, this program has gained popularity and traction within the FFE scholar community.

FFE's commitment to meeting and interacting with our stakeholders involved hosting 8 Open House/student meetings in different locations. Building the student and alumni community and leveraging opportunities for learning, interaction and networking was possible at these events, besides meeting FFE's donors and volunteers. Participation at these events has grown, thanks to FFE's efforts to stay connected with students and alumni throughout the year through social media and newsletters.

FFE won 2 new national awards during FY 2018-19, the Regional Winner for Social Impact in the Education category at the 9th Spirit of Humanity Awards and CSR Project of the Year (Special Jury Mention) 2018 at the annual 'India CSR Summit and Exhibition 2018' in addition to the certifications for good governance, transparency, credibility and accountability.

On behalf of the Board of Trustees, our grateful thanks for your support as we plan for growth and scale. FFE's dynamic team has worked hard to build and grow all programs, with the intent to create impact at scale. We look to your continued involvement and generosity as we plan a future to create a lasting impact together.

DR. SUDHA KIDAO
Managing Trustee

FFE

Mission & Impact

MISSION

To bring about a transformation in the lives of academically bright and economically underprivileged students in India by enabling them to complete their higher education through a Scholarship Program.

"During FY 2018-19, FFE awarded scholarships amounting to Rs 23.70 crores to 5,422 scholars including Engineering and Medical students. FFE is grateful to The Michael and Susan Dell Foundation (MSDF) for their generous grant that has supported the training program for all FFE Engineering Scholars."



IMPACT

Since FFE's inception in 1994, the Foundation For Excellence has helped over 20,300 students in India by awarding scholarships and transforming their lives. During the past 25 years, 57,449 scholarships have been awarded to students in India, in excess of Rs. 160 crores. In FY 2018-19, a total amount of Rs 23.70 crores was awarded in scholarships to 5,422 students. FFE added 1,756 new scholars to its fold, the highest number to date.

FFE's online scholarship application process permits students throughout India to apply. Some students are referred by FFE's numerous NGO partners and many are also identified by FFE's network of over 500 volunteer 'Facilitators' spread across India who are integral to the success of the program. Facilitators are responsible for identifying potential scholarship recipients and many serve as mentors; they also conduct home visits to ensure that students meet FFE's income criterion and validate genuineness of need. FFE is thankful for their dedication and commitment to the cause and salute their efforts to promote FFE's mission to make the scholarship program robust.

Programs & Activities in FY 2018-19

Scholarship Program

FFE's well established merit cum means "Scholarship Program" provides financial assistance in scholarships to students pursuing professional courses in engineering, technology, and medicine. The objective of this program is to provide bright, but financially underprivileged students financial assistance, who, with their own resources may not be able to complete a professional course. Operational for 25 years, the Program provides a scholarship award of up to Rs 40,000 per annum to a qualified student, renewable each year until the completion of his/her professional course.

In FY 2018-19, a total amount of Rs 23.70 crores was disbursed as scholarships to 5,422 students. FFE added 1,756 new scholars during the year to its Scholarship Program.

FFE India Trust has received donations of Rs. 75,19,22,534.36 since its inception in 2003 until 31st March 2019 (excluding grants from FFE Inc. USA), with Rs.3,81,04,230.06 being contributions from FFE scholars. 865 FFE alumni donated Rs .68,46,106/- during FY 2018-19.

IIT-B Students: A partnership between IIT-B Alumni Association and FFE

The Erach & Meheroo Mehta Memorial - Foundation for Excellence Scholarship was launched in partnership with the IIT-Bombay Alumni Association, as part of its Financial Aid Program (FAP). This Scholarship Program is sponsored by erstwhile FFE Board member and US-based IIT-B alumnus Ruyintan Mehta in honor of his parents. During FY 2018-19, a total of 48 scholarships were awarded to students at IIT-B amounting to Rs. 62,27,900/-. This included scholarships to 45 new students and scholarships to 3 renewal students.



23.70cr

SCHOLARSHIPS (Rs)

In FY 2018-19, a total amount of Rs 23.70 crores was disbursed as scholarships.



5,422

TOTAL STUDENTS

During FY 2018-19, scholarships were awarded to 5,422 students.



1,756

NEW STUDENTS

FFE added 1,756 new scholars during FY 2018-19 to its scholarship program.

FFE's investment in its robust technology platform has been critical in enabling the organization scale the scholarship program and integrate the 2 new initiatives, Skills Training and Mentoring; to enable all round view and assessment of a student (including his/her academic and/or other assessments) during their years as a scholar and upon graduation as FFE alumni.

Skill Development and Job Readiness Program

English Communication and Aptitude Skills

FFE's Professional Skill Development Program, now in its second year (FY 2018-19), has been made possible by a generous grant from the Michael and Susan Dell Foundation (MSDF). The purpose of the Wrap Around Skills program is to equip FFE scholars with work-readiness skills required for employability.

The 3-year training program includes a curated set of skills training, delivered through vendor partners for Engineering students, from Year 2-4 of the Engineering program. During FY 2018-19, the program began with second year students completing a diagnostic assessment, AMCAT (Aspiring Minds' Computer Adaptive Test) conducted by Aspiring Minds to understand and identify specific skill gaps. This baseline assessment evaluated FFE Scholars for Aptitude and English communication (through written Logical, Quantitative and English tests) and also Spoken English (through SVAR - voice based assessment) .

The Professional Development program focused on improving English and Aptitude skills of 930 FFE scholars in Year 2 of Engineering, using app-based training platforms; each of the training programs included a baseline and endline test, i.e., pre and post AMCAT (Aspiring Minds Computer Adaptive Test). The English skills were delivered through vendor partners, Hello English for 352 scholars and Kings Learning for 495 scholars and the programs commenced in August

2018. After completion of this course, students commenced an app-based aptitude training in February 2019 through either of 2 vendor partners; 387 students enrolled for aptitude training through FACE (Focus Academy for Career Enhancement) while 307 students enrolled through Pariksha. The performance scores in the end line assessment directed students to either continue with additional English skilling (advanced English/ high-touch English) or Coursera Certification course for advanced subject training and the latest IT reskilling courses required in the competitive marketplace. The English and Coursera options were available to 3rd year Engineering students. The Advanced English Program was conducted for 501 scholars, through a phone-based platform delivered by eAge Tutors (which aimed at improving communication skills, corporate readiness and interview skills of the scholars).

480 scholars in the 3rd year of Engineering qualified for Coursera Online Courses which commenced in October 2018. The courses offered to FFE scholars included 16 Specializations with more than 5 certification courses within each Specialization. This is expected to directly impact and improve student employment opportunities on graduation. In order to encourage and reward learning, monthly gift vouchers for high performers of both English and Coursera programs are being awarded.

A pilot English training program was also launched for FFE's medical scholars, made possible by the MSDF grant. 142 medical scholars in the MBBS program (2nd to 4th year) enrolled in the English training program in March 2019; their endline scores will help determine the success of this English training.

Mock Interviews

Employability of FFE scholars and their success is a focus area for FFE. FFE's vendor partner Ethnus (Eguru) conducted Mock Interview sessions for the third year Engineering students transitioning into the fourth year.

The purpose of the Mock Interviews was to identify and remedy skill gaps, test interview

readiness and to improve preparedness for employment interviews in a competitive environment. An important component of the Skill Development and Job Readiness Program, this program was also supported by the grant from the Michael and Susan Dell Foundation.

A grant from Sundaram Asset Management Company Limited towards FFE's skill development program enabled special mock interview sessions for 63 final year Engineering scholars who required additional preparation for job interviews.

Mentoring Program

FFE's In-House Mentoring Program for Career Readiness

The value of a mentoring program for FFE's scholar community has been long felt and with FFE's scholar needs in mind, an In-House mentoring program was launched in 2017. The Remote Mentoring Program is designed to leverage an industry professional's experience and skill to help students optimize their educational experience, to assist the student's socialization into a disciplinary culture and to help mentees acquire essential job readiness skills by serving as a mentor. The mentoring curriculum provides the framework for the 6-8 month mentoring program. Participating students were matched with mentors based on their course of study, language, gender and general interests.

The mentorship program included 200 mentor-mentee pairs during FY 2018-19; FFE received financial support as well as volunteer employee mentors from Axtia India Private Limited, HP PPS India Operations Private Limited, Intel Technology India Private Limited and Robert Bosch Engineering & Business Solutions Limited.

Volunteers from Amazon, Boeing India Private Limited and Amdocs, served as mentors while a grant from Sundaram Asset Management Company Limited and The Hans Foundation provided financial support towards the mentoring program.

Alumni Program

FFE's unique self-sustainability model where alumni 'pay-forward' to support the education of students when they graduate and gain employment as part of the "Circle of Giving" is a program that has grown. Direct alumni contributions to FFE during FY 2018-19 was Rs. 68,46,106/- with an additional Rs. 1,10,62,257/- through CSR support from corporates where alumni are employed, along with donations received from personal and professional networks of FFE's alumni. Total contributions by FFE alumni (direct and indirect) to FFE amounted to Rs. 1,79,08,363/- during FY 2018-19, with 865 alumni donating to FFE, including 243 first time donors and 622 repeat alumni donors.

The Cognizant Foundation made a generous grant to FFE to match donations by FFE's alumni during FY 2018-19. This has enabled 238 scholars to be supported for the third year through the joint partnership between FFE alumni and Cognizant Foundation. FFE is deeply thankful to Cognizant Foundation for the donation that has promoted 'giving'.

FFE's alumni have been making financial contributions to FFE, bringing visibility to FFE's work, volunteering as mentors to FFE's scholars and also serving as volunteer Facilitators. FFE is proud and thankful to its alumni worldwide and continues to seek their support to grow and sustain FFE's various program.

Student Coordinator Program

FFE's Student Coordinator Program, launched during FY 2016-17, is a leadership program where selected students who have demonstrated initiative and leadership skills were selected to represent FFE and serve as local leaders; they served as coordinators with the growing number of FFE scholars in specific colleges across India. During FY 2018-19, FFE worked with over 328 Student Coordinators from 359 colleges, who in addition to

coordinating activities within the FFE scholar community also have initiated local meetings, bringing the larger community of FFE scholars together. FFE has honoured Student Coordinators with Leadership Certificates at the Open House events.

Corporate Workshops and Employee engagement

FFE Capgemini Impact Story: 'KUDOS' Book Launch

FFE's partner, Capgemini Technology Services India Pvt. Ltd., launched a Coffee Table Book titled "Kudos" in Bangalore on 1st August 2018. The book featured impact stories of 15 FFE scholars supported by Capgemini through the FFE Scholarship Program. The launch included Christine Mary Hodgson - Head of Corporate and Social Responsibility Business Coordination UK at Cap Gemini S.A, Srinivas Kandula - Chief Executive Officer, Capgemini India & Capgemini Group Executive Member, Anurag Pratap - Capgemini CSR Leader and members of Capgemini.

Workshops by our Partners

On account of Daan Utsaav or the Festival of Giving, Microsoft India Global Technical Support Center (GTSC) held a workshop for FFE's Engineering scholars in October 2018 at their Bangalore office. Topics covered at the workshop included *Basics of Cloud Computing*, *Introduction to machine learning*, *Introduction to IOT* and an informative session focused on requirements for hiring beyond academic qualifications.

FFE's partner Arcesium India Private Limited organized a workshop for FFE engineering scholars studying in Hyderabad. The October workshop focussed on Interview Readiness.

International Women's Day 2019 at Intel India, Bangalore

Intel India through its Employee Engagement Initiative, 'Intel Involved', organized a one-day

workshop on 16th March 2019 that featured 'Artificial Intelligence' and a soft-skills session by professors from Azim Premji University, the latter focusing on how to be 'Campus to Corporate Ready'. Over 31 FFE scholars participated in the event along with Intel employee volunteers.

Training and Internships

Summer Research Internship Program (SRIP)

Three FFE scholars were selected to be part of the IIT-Gandhinagar's sixth edition of the Summer Research Internship Program (SRIP) at IIT-Gandhinagar, Gujarat during May-July 2018. The program aims at building strong ties and partnerships between IIT-Gandhinagar and other institutions, bringing students and faculty from premier institutes across the country to participate in ongoing research projects and receive mentoring from the Institute's faculty.

Employability of FFE scholars and their success is a focus area for FFE. Our programs are designed to directly impact and improve student employment opportunities on graduation.

The Annual Open House events hosted by FFE have become unique opportunities for engagement and interaction with all FFE stakeholders - students, alumni, donors and volunteers.

Outreach Activities in FY 2018-19

The Annual Open House events hosted by FFE have become unique opportunities for engagement and interaction with all FFE stakeholders- students, alumni, donors and volunteers. It has also provided a forum to hear challenges and exchange ideas and to offer unique learning experiences to students through workshops and interactive sessions sponsored by FFE's numerous donor partners. FFE's annual "Open House" events were hosted in 8 locations in India during FY 2018-19 and attended by over 1100 participants. Scholarships and certificates were awarded to students at these events. Numerous alumni, volunteers and donors attended the open house events. The events also provided a platform to highlight FFE's vision, work and accomplishments, hear student and alumni achievements and interact with FFE's growing stakeholder community.

FFE's Annual Open House events and/or student meetings were held in Pantnagar-Uttarakhand, Hyderabad, Chennai, Bangalore, Kolkata, Jamshedpur, Guwahati and Srinagar-Uttarakhand,

In association with The Hans Foundation (THF), FFE hosted its inaugural Open House for FY 2018-19 on 11th September 2018 at the College of Technology, G.B. Pant University of Agriculture and Technology Pantnagar, Uttarakhand. Dr. H C Sharma, Dean-College of Technology, presided over the Pantnagar Open House. The Hyderabad Open House was led by FFE's COO, Ms. Sandhya Manoj who had an interactive session with students.

The following distinguished individuals presided at the Open House events at the following locations: Mr. Gopal Srinivasan, Chairman & MD, TVS Capital Funds (P) Limited at Chennai, Ms. Lalitha Indrakanti (Managing Director & Country Leader, Cargill Business Services India Pvt. Ltd.) and Dr. Meenakshi Bhat (Professor, Clinical Genetics & Mazumdar Shaw Research Chair, Centre for Human Genetics, Bangalore) at the Bangalore Open House, Mr. Vinayak Lohani (Founder, Parivaar) at the Kolkata Open House, Dr. Prabhat Kumar (Assistant Professor, Department of Chemistry,

NIT-Jamshedpur) at the Jamshedpur Open House. FFE also held its inaugural interactive meet with FFE scholarship recipients studying in Indian Institute of Technology (IIT) - Guwahati on 25th February 2019.

Both the Jamshedpur and Guwahati events were student led and organized; this was made possible by the strong support of FFE's student leaders who served as Student Coordinators from the respective colleges who managed the event.

The last event of the FY was held with FFE scholars at the National Institute of Technology (NIT)-Srinagar, Uttarakhand and was led by FFE's Project Manager, Tanvi Rawat in Uttarakhand on 25th March 2019. 21 FFE scholars supported by a grant from The Hans Foundation (THF) met to discuss their specific challenges regarding placements; FFE has been providing students with additional training and placement support to help them compete for jobs, based on student feedback.

At the Open House, Scholarship cheques were awarded to students and Leadership Certificates were awarded to student leaders in various colleges. Special Certificates of Appreciation were also awarded to FFE's outstanding alumni and volunteers (Facilitators).

Workshops at FFE's Open House events

During each Open House, FFE invited its corporate partners to conduct workshops or interactive sessions for the scholars attending the event.

FFE's many corporate partners conducted workshops at the Open House events including Capgemini Technology Services India Pvt. Ltd on 'Leadership and Time Management' at the Hyderabad Open House. FirstSource Solutions Limited conducted a session 'From Campus to Corporate' while KLA Tencor Software India Private Limited addressed 'Ethics &

Environmental Impact for Engineers -Fast Forward by 10 years', both at the Chennai Open House. A special session for MBBS scholars in Chennai addressed different career options in the medical profession.

Interactive workshops for Engineering students were held by TransUnion CIBIL Limited (CIBIL) entitled 'Crafting a Successful Career' while 'Corporate Etiquette' was led by Oracle India Pvt. Ltd following the Bangalore Open House. Dr. Thelma Narayan, Senior Advisor - Academics and Health Policy Action at SOCHARA (Society for Community Health, Awareness, Research and Action), addressed the medical scholars on public health and equity, and health related topics

Cognizant Technologies Ltd. led a participatory session for Engineering scholars on 'Blockchain – A Technology with Tremendous Potential' following the Kolkata Open House. Dr. Chand Bhargava (Medical Administrator, Apollo Gleneagles Hospitals Ltd.) led an insightful and interesting session for MBBS Scholars, highlighting various career options for doctors within and beyond the medical field.

In 2018-19, FFE was recognized not only for our outstanding contribution to the gifted students from financially constrained backgrounds, but also for good governance practices and demonstrating transparency.

Awards and Recognition

Regional Winner Award at Spirit of Humanity Awards 2018, Mumbai

FFE was declared the 'Regional Winner for Social Impact' in the Education category at the 9th Spirit of Humanity Awards. An initiative of Americares India, the event was held in Mumbai on 17th September 2018. The Spirit of Humanity is a national platform that recognizes organizations in the social sector for their outstanding contribution to the underprivileged community.

CSR Project of the Year (Special Jury Award) at 5th CSR Impact Awards 2018, New Delhi

At the 5th CSR Impact Awards 2018, FFE India Trust was awarded the 'CSR Project of the Year (Special Jury Mention) Award' at the annual 'India CSR Summit and Exhibition 2018' held on 24-25 September, 2018. This is the largest CSR forum in India and the largest development sector forum in South Asia. The Award was presented by Shri Anant Kumar Hegde, Union Minister of State for Skill Development and Entrepreneurship, Govt. of India.

An initiative of NGOBOX, the CSR Impact Awards recognize organizations implementing high-impact CSR projects in 14 categories at national level. The event hosted more than 1,800 organizations from across the country, 110+ exhibitors and more than 3000 delegates.

Credibility Alliance Certification

FFE continued to be accredited by Credibility Alliance under its highest 'Desirable Norms' certification. Valid for a period of 5 years

until 2021, this certification recognizes the importance that the foundation attaches to good governance practices.

Credibility Alliance, a consortium of Voluntary Organizations, aspires to build trust among all stakeholders by improving Governance in the Voluntary Sector. To be eligible, each voluntary organization undergoes an audit and a review of the assessment reports by the Central Accreditation Committee prior to certification.

GuideStar India Gold Seal Certification

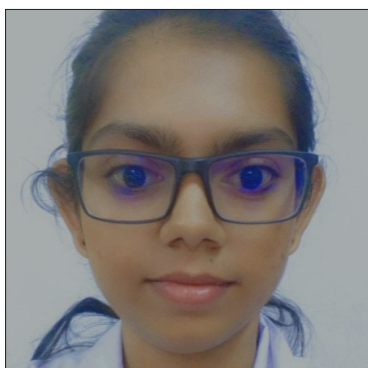
FFE has once again received the 'Advanced Level - GuideStar Gold Seal Certification' from GuideStar India in May 2019. This certificate is given for demonstrating transparency in the public domain. GuideStar India, is a database of more than 6,000 NGOs –facilitating donations to causes and organizations. While any voluntary organization can register itself on the GuideStar Website, the Advanced Level Gold Seal Certification is received only after a rigorous diligence process.

Sammaan

The FFE Scholarship Program was approved by BSE Sammaan - an initiative of Confederation of Indian Industry (CII), BSE and Indian Institute of Corporate Affairs (IICA). It is a platform, the first of its kind that bridges the gap between Corporates and NGOs. This approval brings FFE on the radar of many corporates for their CSR activities.

Inspiring Change

FFE Scholars



PURVI BAMBHANIYA

MBBS (Year II, Sem 3)

B J Medical College, Ahmedabad

Purvi is an enthusiastic and diligent student with a firm conviction that it is her hard work and dedication that will bring her success and laurels.

Purvi's family of 5 is supported by her father who works as an Octroi Guard at the Nagar Palika (Municipality) while her mother is a homemaker. Purvi's younger sister and brother are students as well. Purvi's parents are committed to providing Purvi and her siblings the best education that they can afford. This has meant hardwork for her parents to make ends meet for the family.

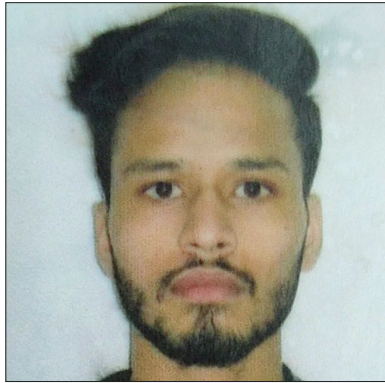
Amidst these adversities, Purvi aspires to become a successful Medical Practitioner and serve in India's rural areas where good medical facilities are limited. Having witnessed sick individuals from her home town being rushed to cities for medical aid as well as death of people due to the lack of medical facilities locally, Purvi decided to pursue science and the medical profession, as aspiration she had since childhood.

Hailing from Junagadh in Gujarat, Purvi lacked the guidance of a mentor to help her prepare for her entrance exams to Medical College. However, through her meticulous work and determination to succeed, Purvi qualified with good scores in the Standard 12 examination along with a qualifying NEET rank to enrol for the MBBS program at B.J Government Medical College, Ahmedabad. Purvi's Professors and her parents remain a constant source of support to her in College where she continues to perform well academically. Purvi has been supported by the FFE scholarship from Year 1 and is committed to making her donor and FFE proud through her accomplishments.

Purvi's hobbies include reading and quizzing; she also actively participates in college activities. Purvi's mother is her inspiration, and her support and encouragement has been critical to her success so far. Once she is financially self-reliant, Purvi hopes to bring quality medical care to the villages of India.

"I aspire to become a successful Medical Practitioner and serve in India's rural areas where good medical facilities are limited... to make my donor and FFE proud."

PURVI BAMBHANIYA, FFE SCHOLAR



GAURAV BISHT

BTech, 3rd year, Mechanical
NIT, Silchar

A native of Gopeshwar, Uttarakhand, Gaurav is a 3rd year student studying in NIT Silchar, Assam. His father who had never had a chance to study, works as a daily wage labourer at construction sites.

Gaurav's family has witnessed many adversities, further worsened by his father's declining health over the years. But even in the depth of despair, one thing that always helped the family's dreams stay afloat was a brilliant son who was like a ray of hope for their deteriorating situation. ***"From as long as I can remember, I have never seen my father take a day off for himself. He has always been working hard to support our family and this has also affected his own health."*** says Gaurav, who is determined to improve the economic situation of his family. Gaurav saw education as a tool to fight this battle.

Gaurav excelled in academics throughout school. He was determined to cross the boundaries of his village to study further; this happened immediately when he was selected by an entrance test to enroll in the Jawahar Navodaya Vidyalaya (JNV). JNV is a system of alternate schools for gifted students across India and is an autonomous

organization under the Government of India. This was a major turning point in Gaurav's life. As he left his home for further studies in JNV, he made a promise to himself and his parents that he would only return successful. With an exemplary academic record in Class 12 exams, Gaurav was selected by 'SUPER 30' in Bihar for additional coaching for the Engineering entrance tests. His good rank in the JEE exams helped him enroll at NIT-Silchar, thereby fulfilling the promise that he had made 7 years ago when he left his home.

The high college fee necessitated that his father apply for a loan; though a big burden to bear, this was a necessary step without which Gaurav would have never made it to the college. This financial burden was soon lightened when Gaurav's application for the FFE Scholarship was selected and he was awarded the 'Hans - FFE Scholarship'. Gaurav says, "The Hans-FFE scholarship saved me and my family from going deeper into debt and allowed me to focus on my studies."

Gaurav has a keen interest in robotics which he would like to pursue. Having experienced financial adversity, Gaurav is committed to helping students like him and is currently mentoring a few of his juniors and is serving as a role model to his peers and others in need.

"The Hans-FFE scholarship saved me and my family from going deeper into debt and allowed me to focus on my studies."

GAURAV BISHT, FFE SCHOLAR

Gaurang Shah

Proud Alumnus



SCHOLARSHIP YEAR: 1999 TO 2003

Dharmsinh Desai Institute of Technology, Gujarat
Employed as Senior System Software Manager
NVIDIA Graphics Pvt. Ltd., Pune

Gaurang Shah's family of four, while close knit were hard hit when his father lost his job in 1989. Gaurang however managed to stay focussed on his studies and scored well in his Grade 12 exams. This opened up several opportunities for him; Gaurang pursued his B.E. in Information Technology at Dharmsinh Desai Institute of Technology, Gujarat.

Gaurang had to soon enrol in college where the fee, lodging and education related costs were beyond the family's reach. His family was forced to borrow money from relatives to pay the initial fees; this obligation had an effect on his ability to focus on his studies as well as his self-confidence.

Meanwhile, his class teacher from school and FFE's volunteer facilitator, Mr. Jignesh M. Shah introduced him to FFE's scholarship program. Gaurang qualified and was awarded FFE's scholarship that covered the cost of tuition and his books, easing his financial burden so that paying for his education was no longer a worry. Gaurang says "FFE came in to my life at a time of utmost need. I completed my Engineering with First Class & distinction grade."

Several people have helped Gaurang in his journey but he counts FFE as one of the most influential in that list to whom he owes his success. "I don't know whether I could have finished my B.E. successfully without the timely financial assistance from FFE" reminisces Gaurang.

Gaurang is currently employed at NVIDIA Graphics Pvt Ltd, Pune. Since 2014, he has been making regular financial contributions to FFE, honouring his pledge of support and participating in FFE's 'Circle of Giving' through the Adopt A Scholar Program (ASP), supporting the education of FFE scholars. For past few years, he has also created awareness about FFE and its work among his colleagues and peers at NVIDIA who are also donating to FFE. Donations from Gaurang and his colleagues to FFE have been matched through NVIDIA's Employee Matching Grant Program, thereby doubling their support to FFE. Gaurang is honoured to be a part of the FFE family. He proudly states that "FFE is doing a great job in identifying deserving students and providing them an opportunity to continue their studies along with other support to transform their lives. I will always remain indebted to FFE for the same."

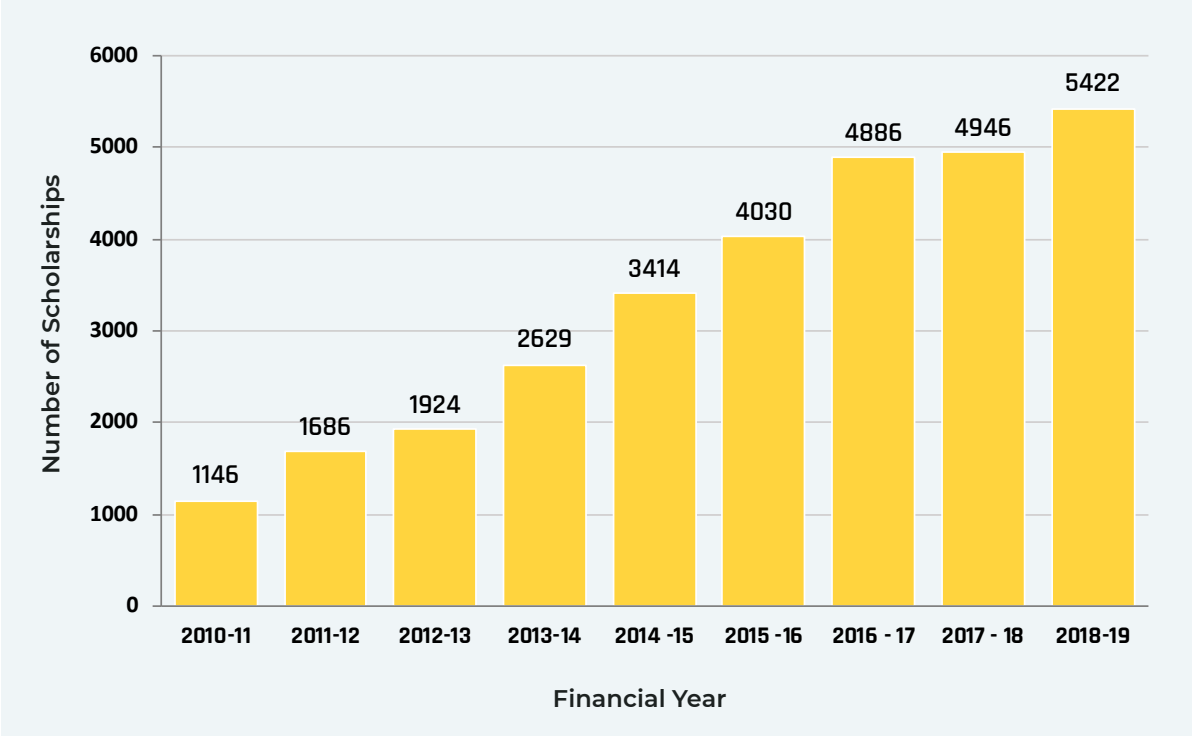
"FFE is doing a great job in identifying deserving students and providing them an opportunity to continue their studies... I will always remain indebted to FFE for the same."

GAURANG SHAH, FFE ASP ALUMNUS

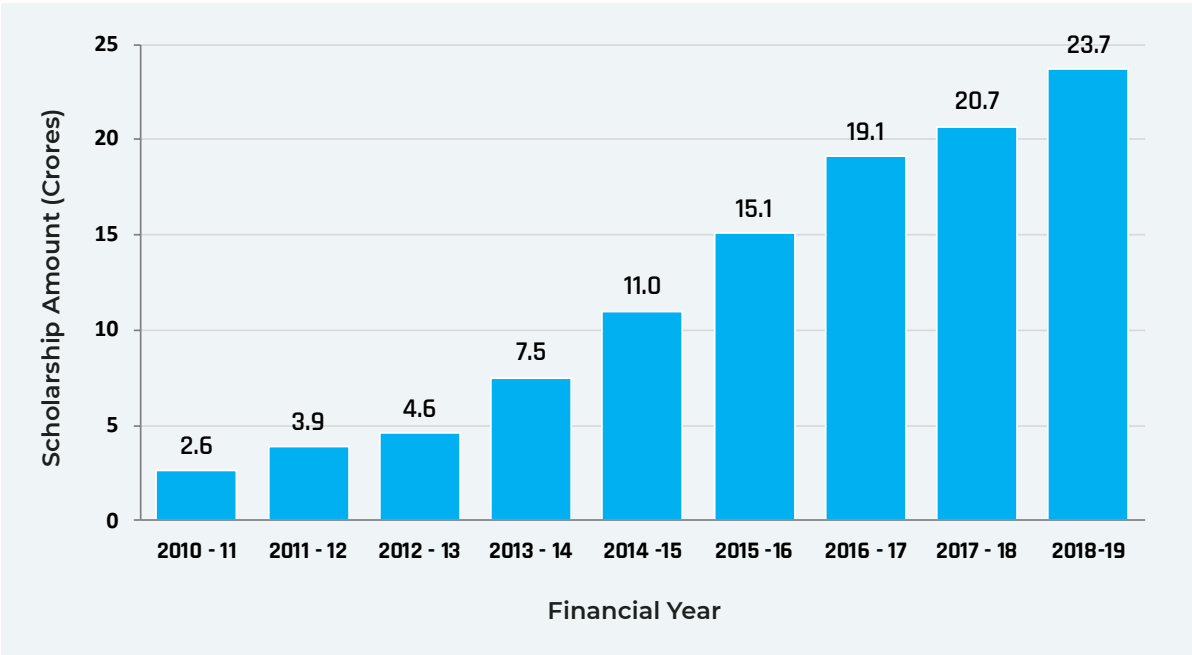
FY 2018-19

Scholarship Statistics

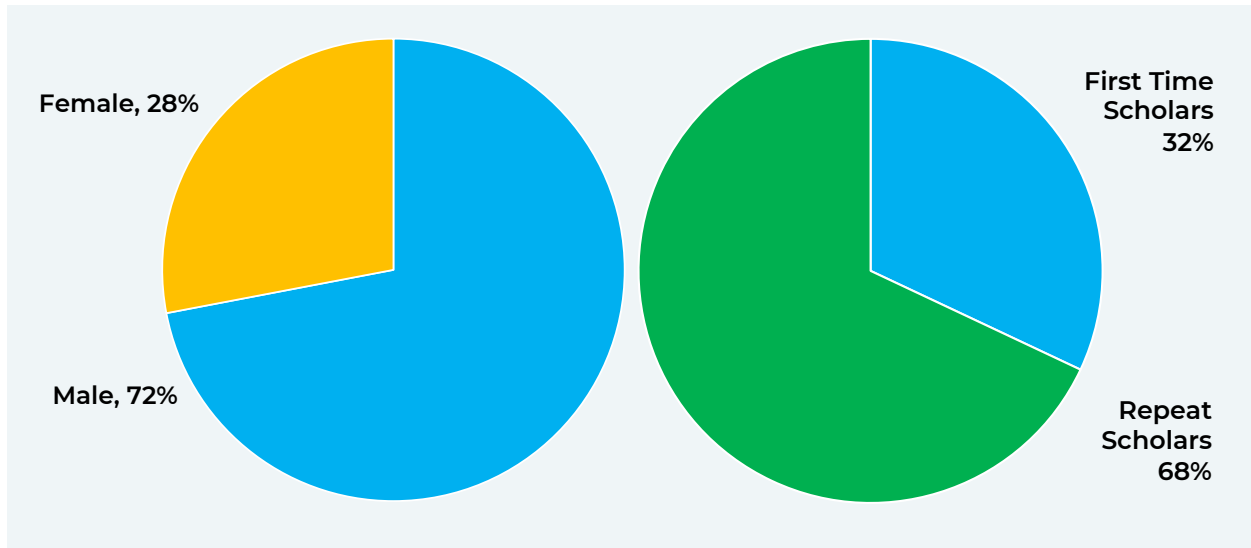
Number of Scholarships



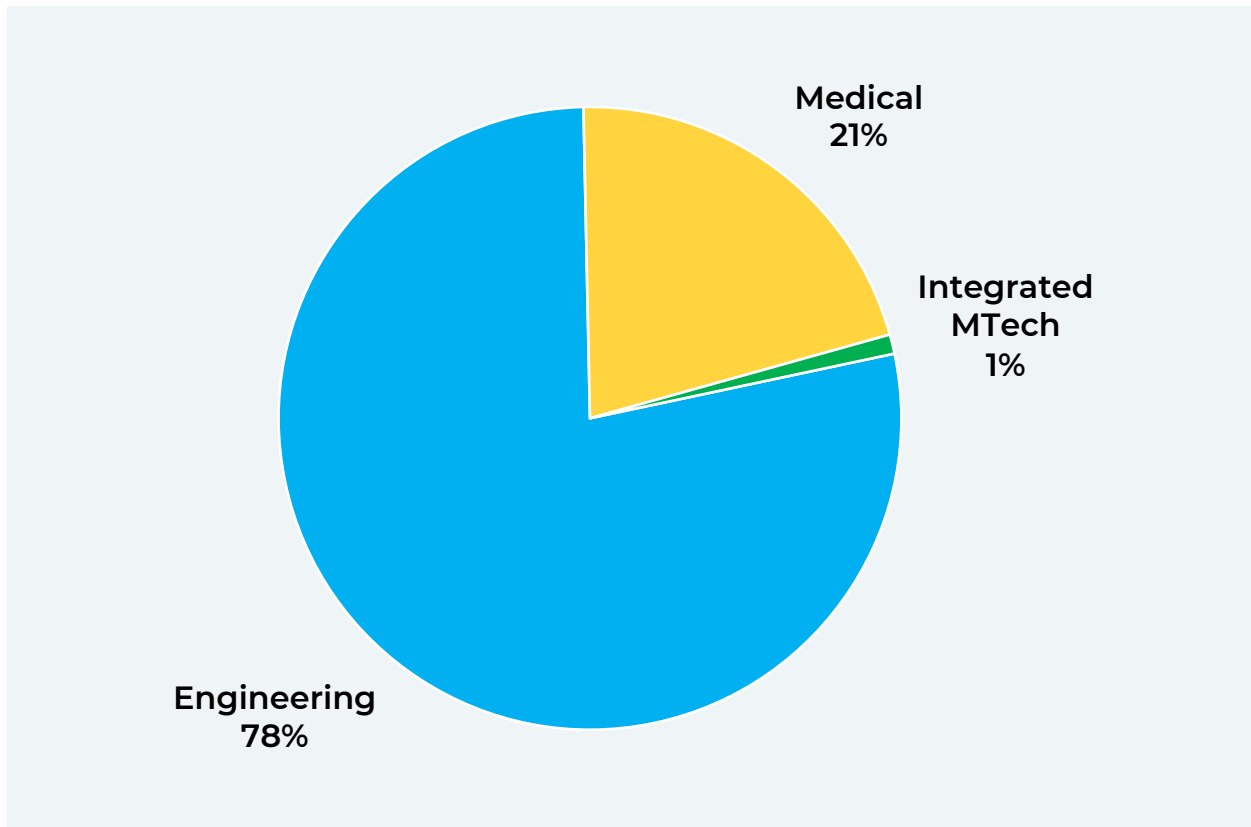
Scholarship Amount (₹ Crores)



Scholarships Ratio in 2018-2019

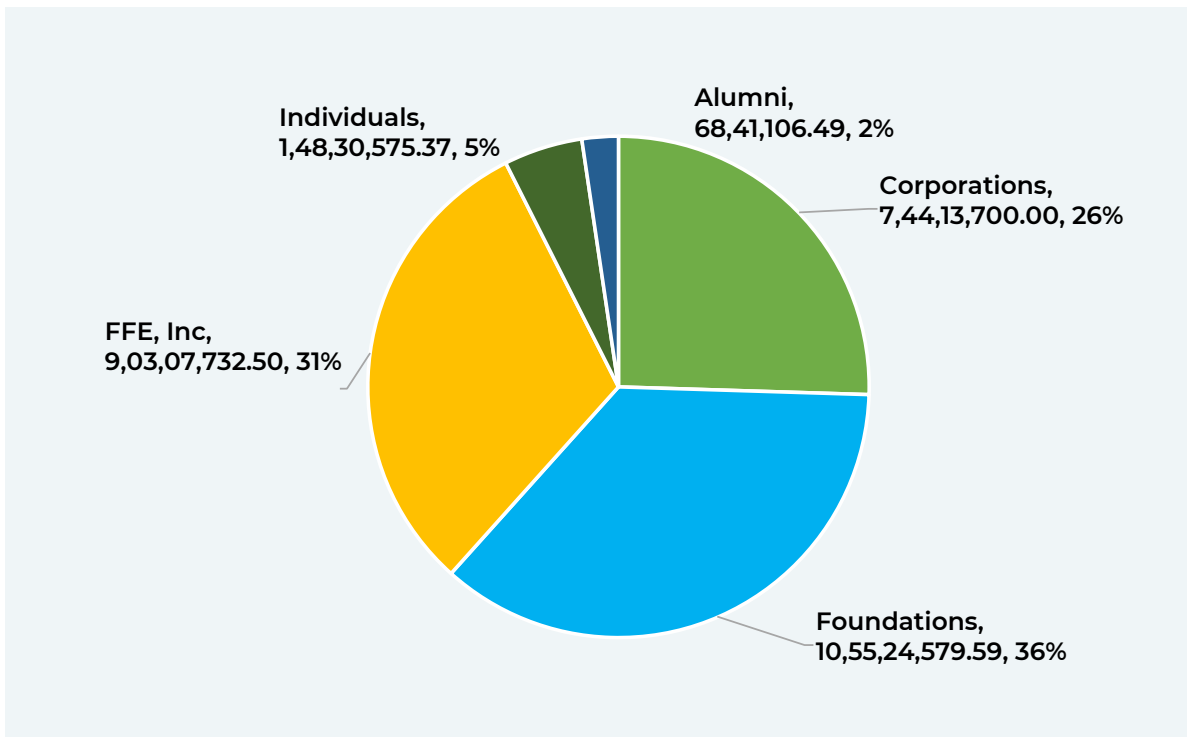


Scholarships by Professional Course

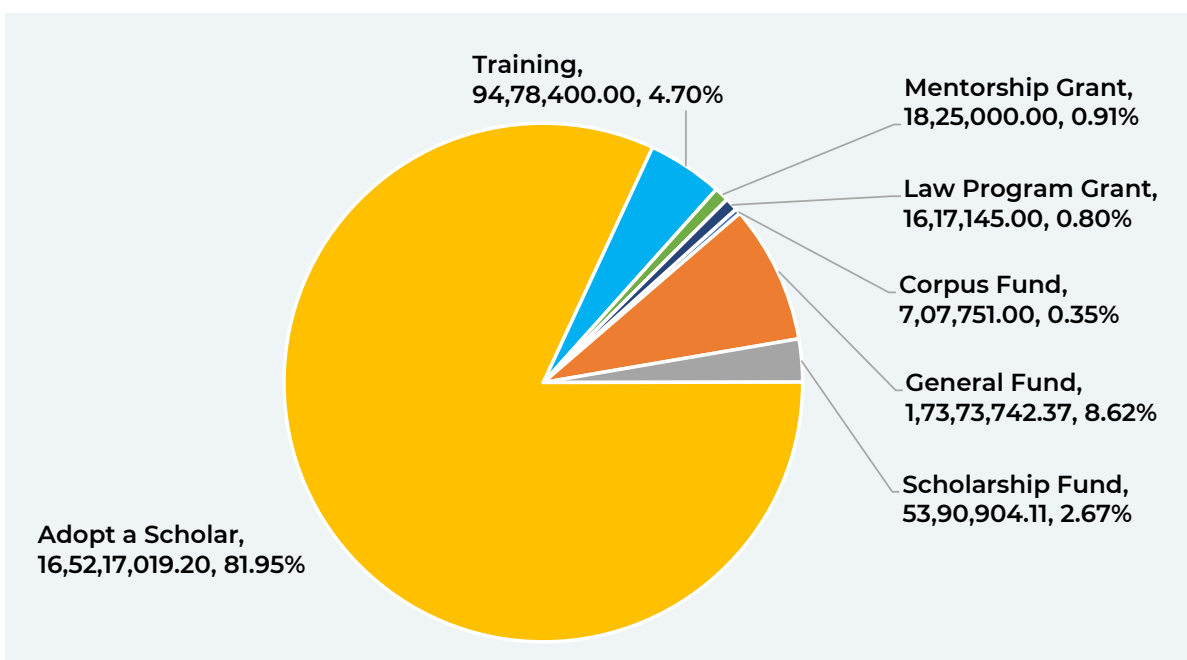


FY 2018-19 Donations Received

Donations by Category (in Rs.)



Purpose of Donations (in Rs.)



Our Supporters

During the year ended 31st March 2019, FFE received donations amounting to Rs. 29.19 crores. FFE India Trust received Rs.20,16,09,961.45 in donations; additionally, Rs. 9,03,07,732.50 was contributed by FFE-USA during FY 2018-19.

Several organizations and individuals donated generously to ensure the continued success of our mission. We thank our donors and supporters for their continued support of all our programs.



Corporates

- Amansa Social Foundation
- Arcesium India Private Limited
- Atos IT Services Private Limited
- Axtria India Private Limited
- Bajaj Allianz General Insurance Co. Limited
- Bajaj Auto Limited
- Bengal Finance and Investment Pvt.Ltd
- Bill Forge Private Limited
- Broadcom Communications Technologies
- Capgemini Technology Services India Pvt. Ltd.
- Capillary Technologies India Private Limited
- Cargill Business Services India Private Limited
- Cognizant Technology Solutions India Pvt. Ltd.
- DISA India Limited
- EMC Software & Services India Private Limited
- Faiveley Transport Rail Technologies India Ltd
- First Source Solutions Limited
- Fractal Analytics Pvt. Ltd
- Helion Advisors Private Limited
- Ingersoll Rand Technologies And Services Pvt Ltd
- ISG Novasoft Technologies limited
- Juniper Networks India Pvt. Ltd.
- KLA-Tencor Software India Private Limited
- NetApp India Private Limited
- Omidyar Network India Advisors Pvt. Ltd.
- Prakash Cotton Mills
- Robert Bosch Engineering & Business Solutions
- S&P Capital IQ (India) Private Limited
- Societe Generale Global Solution Centre Pvt Ltd
- Sonus Networks India Private Limited
- Sundaram Asset Management Company Ltd.
- Transunion CIBIL Limited
- True North Managers LLP

Foundations

- A World Of Opportunity Foundation
- Arpan Foundation
- Charities Aid Foundation India
- Charities Aid Foundation of America
- Cognizant Foundation
- Dyuthi Charitable Trust
- Foundation For Excellence Inc., USA
- Give Foundation Inc, USA
- Give India
- Michael And Susan Dell Foundation
- SG Cares
- Siva & Royan Foundation
- The Hans Foundation
- The UK Online Giving Foundation
- United Way Worldwide

Over 933 individuals donated generously to FFE India Trust during the year, with 865 of these being FFE's alumni. We acknowledge and thank these individuals for their valuable support.

Constitution of the Board of Trustees

| Name | Position on the Board | Meetings attended | Years on the Board | Gender | Occupation |
|-----------------------|-----------------------|-------------------|--------------------|--------|--------------------------------------|
| Sudha Kidao | Managing Trustee | 4 | 8 years, 7 months | Female | Managing Trustee, FFEIT |
| Smita V. Uttarwar | Trustee | 4 | 15 years, 9 months | Female | Entrepreneur |
| Rishiksha T. Krishnan | Trustee | 4 | 9 years, 9 months | Male | Professor of Strategy, IIM Bangalore |
| Venktesh Shukla | Trustee | 4 | 9 years, 9 months | Male | Entrepreneur |

Notes

- Four meetings of the Board of Trustees were held during the year ended 31st March 2019 - on 26th June 2018, 14th September 2018, 7th November 2018 and 06th March 2019.
- None of the Trustees are related to each other.
- None of the Trustees have received remuneration from the Trust.
- The Managing Trustee was reimbursed travel cost on actuals.

Distribution of Staff

| Gross monthly salary (In Rs) | Male Staff | Female Staff | Total |
|------------------------------|------------|--------------|-----------|
| <10,000 | 0 | 0 | 0 |
| 10,000 – 25,000 | 3 | 7 | 10 |
| 25,000 – 50,000 | 1 | 10 | 11 |
| 50,000 – 1,00,000 | 0 | 5 | 5 |
| >1,00,000 | 0 | 1 | 1 |
| Total | 4 | 23 | 27 |

Notes

- The total cost of domestic travel (including project related) during the year was Rs.5,20,055/- of which Rs.3,70,985/- was incurred by Sudha Kidao, Managing Trustee.
- The total cost of international travel during the year was Rs.1,72,265/- incurred by Sudha Kidao, Managing Trustee to attend FFE-USA's Annual Gala in California.

Auditor's Report

from 1st Apr 2018 TO 31st March 2019



G.S. Prakash, B.Com., F.C.A.,
Chartered Accountant

No. 8, 4th Main Road,
(Near Model High School), Chamarajpet
Bangalore - 560 018
Phone : +91 80 2660 3687
Telefax: +91 80 2660 3686
E-mail : pganagnur@yahoo.in
prakashca@dataone.in

FORM NO. 10B

[See Rule 17B]

Audit Report under section 12A (b) of the Income-tax Act, 1961 in the case of charitable or religious trusts or institutions

I have examined the balance sheet of **FOUNDATION FOR EXCELLENCE INDIA TRUST, AAATF 0985 D** [name and PAN of the trust or institution] as at 31st March 2019 and the Profit and loss account for the year ended on that date which are in agreement with the books of account maintained by the said Trust or institution.

I have obtained all the information and explanations which to the best of my knowledge and belief were necessary for the purposes of the audit. In my opinion, proper books of account have been kept by the head office and the branches of the above-named Trust visited by me so far as appears from my examination of the books, and proper Returns adequate for the purposes of audit have been received from branches not visited by me subject to the comments given below: -

- I have verified the compliance with the provisions of Chapter XVII - B, in respect of deduction of tax at source, in accordance with the auditing standards generally accepted in India and the recommendation of the Institute of Chartered Accountants of India which include test checks and concept of materiality.*
- 1
 - 2 *In respect of 40A(3), I have relied on the Assessee's representation that payment has been made by way of other than cash, as the necessary evidence is not in the possession of the assessee.*

In my opinion and to the best of my information, and according to information given to me the said accounts give a true and fair view: -

- (i) in the case of the balance sheet, of the state of affairs of the above named Trust as at 31st March 2019 and
- (ii) in the case of the profit and loss account, of the profit or loss of its accounting year ending on 31st March 2019.

The prescribed particulars are annexed hereto.

Place: **BANGALORE**

Date: **26-Sep-2019**



G.S. PRAKASH

M. No. 021987

NO.8, 4TH MAIN, CHAMARAJAPET,
BANGALORE-560018

UDIN: 19021987 AAAA1M4D81

Income & Expenditure

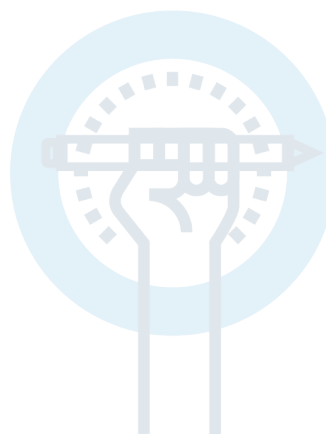
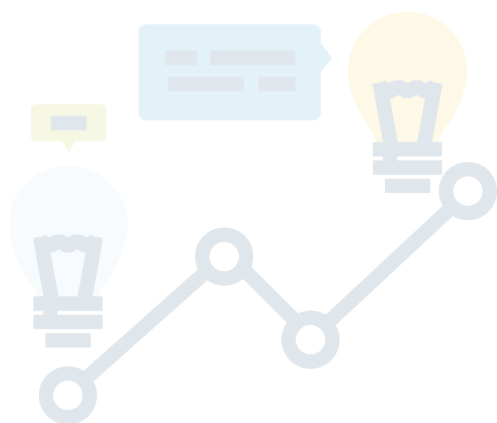
for the year ending on 31st Mar 2019

| PARTICULARS | Sch Nos | Year Ended 31.03.2019 | Year Ended 31.03.2018 |
|---|---------|------------------------|------------------------|
| INCOME | | | |
| To Donations Received | 9 | 29,34,28,222.77 | 24,70,03,259.42 |
| Cognizant Outreach Grant | - | 1,78,595.00 | 70,42,584.00 |
| Interest Received | 10 | 55,57,476.76 | 50,45,367.56 |
| Other Receipts | 11 | 19,700.00 | 1,27,100.00 |
| TOTAL | | 29,91,83,994.53 | 25,92,18,310.98 |
| EXPENDITURE | | | |
| By Student Scholarship Payments | 12 | 23,67,65,545.00 | 20,71,70,472.00 |
| Cognizant Outreach Scholarship Payments | - | 1,78,595.00 | 70,42,584.00 |
| Skills Training Cost | 13 | 82,64,613.82 | 30,74,023.00 |
| Employee Cost | 14 | 1,16,89,798.00 | 98,78,046.00 |
| Office Rent | - | 10,88,285.00 | 9,56,035.00 |
| Office Expenses | 15 | 4,28,969.00 | 5,28,424.26 |
| Travel Expenses | 16 | 2,79,092.00 | 3,06,971.00 |
| General Support Expenses | 17 | 3,75,035.00 | 5,00,977.58 |
| Professional and Support Services | 18 | 32,68,799.00 | 44,80,059.24 |
| Project Expenses | 19 | 88,05,180.00 | 1,08,19,750.00 |
| Depreciation | 5 | 2,27,460.00 | 2,43,043.00 |
| Excess of Income Over Expenditure | | 2,78,12,622.71 | 1,42,17,925.90 |
| TOTAL | | 29,91,83,994.53 | 25,92,18,310.98 |

Balance Sheet

as at 31st Mar 2019

| PARTICULARS | Sch Nos | As at 31.03.2019 | As at 31.03.2018 |
|-----------------------------|---------|-----------------------|-----------------------|
| LIABILITIES | | | |
| Corpus Fund | 1 | 2,51,86,716.07 | 2,44,78,965.07 |
| General Fund | 2 | 5,65,40,193.26 | 2,87,27,570.55 |
| Project Balances | 3 | 73,59,841.18 | 97,56,716.00 |
| Other Payables | 4 | 48,693.00 | 1,07,149.00 |
| TOTAL | | 8,91,35,443.51 | 6,30,70,400.62 |
| ASSETS | | | |
| Fixed Assets | 5 | 9,66,460.33 | 9,64,793.33 |
| Investments in 8%-GOI Bonds | | 97,00,000.00 | 1,11,95,000.00 |
| Other Receivables | 6 | 11,76,316.13 | 7,01,842.13 |
| Deposits | 7 | 6,56,799.00 | 6,54,299.00 |
| Cash & Bank Balances | 8 | 7,66,35,868.05 | 4,95,54,466.16 |
| TOTAL | | 8,91,35,443.51 | 6,30,70,400.62 |



Schedules

Forming part of Financial Statements (Income & Expenditure) for the Year Ended 31st March, 2019 (Figures in Rupees)

| PARTICULARS | Year Ended 31.03.2019 | Year Ended 31.03.2018 |
|---|--------------------------|--------------------------|
| Schedule-1 : Corpus Fund | | |
| To Balance as per last Balance Sheet | 2,44,78,965.07 | 2,00,36,414.07 |
| Add: Additions during the year | 7,07,751.00 | 44,42,551.00 |
| | 2,51,86,716.07 | 2,44,78,965.07 |
| Schedule-2 : General Fund | | |
| " Balance as per last Balance Sheet | 2,87,27,570.55 | 1,45,09,644.65 |
| " Add: Excess of Income Over Expenditure | 2,78,12,622.71 | 1,42,17,925.90 |
| | 5,65,40,193.26 | 2,87,27,570.55 |
| Schedule-3 : Project Balances | | |
| " Michael and Susan Dell Foundation | 46,93,285.18 | 33,60,418.00 |
| " The HANS Foundation | 17,25,892.00 | 53,98,359.00 |
| " A World Of Opportunity Foundation | 8,79,971.00 | 7,58,651.00 |
| " Cognizant Outreach Program | 60,693.00 | 2,39,288.00 |
| | 73,59,841.18 | 97,56,716.00 |
| Schedule-4 : Other Payables | | |
| " EPF Employee Subscription FCRA (Mar-19) | 32,491.00 | 31,178.00 |
| " EPF Employee Subscription Non-FCRA (Mar-19) | 10,225.00 | 9,926.00 |
| " Professional Tax FCRA (Mar-19) | 4,400.00 | - |
| " Professional Tax Non-FCRA (Mar-19) | 1,200.00 | - |
| " Other Payables A/c | 377.00 | 66,045.00 |
| | 48,693.00 | 1,07,149.00 |
| Schedule-6 : Other Receivables | | |
| " Income Tax Refundable | - | 5,52,788.13 |
| " Other Receivable | 11,76,316.13 | 1,49,054.00 |
| | 11,76,316.13 | 7,01,842.13 |
| Schedule-7 : Deposits | | |
| " Rent Deposit | 6,50,000.00 | 6,50,000.00 |
| " Telephone Deposit | 5,799.00 | 3,299.00 |
| " Other Deposit (CC Avenue) | 1,000.00 | 1,000.00 |
| | 6,56,799.00 | 6,54,299.00 |
| Schedule-8 : Cash and Bank Balances | | |
| " Cash - FCRA | 2,131.00 | 376.00 |
| " Cash - Non FCRA | 6,552.00 | 14,315.00 |
| Savings Bank Accounts: | | |
| " ICICI Bank - FCRA | 3,06,23,925.73 | 1,67,38,025.22 |
| " ICICI Bank - Non FCRA | 92,83,716.32 | 88,59,017.39 |
| Fixed Deposits: | | |
| " ICICI Bank - FCRA | 2,54,97,847.00 | 1,87,28,732.55 |
| " ICICI Bank - Non FCRA | 1,12,21,696.00 | 52,14,000.00 |
| | 7,66,35,868.05 | 4,95,54,466.16 |

Schedules

Forming part of Financial Statements (Income & Expenditure) for the Year Ended 31st March, 2019 (Figures in Rupees)

| PARTICULARS | Year Ended 31.03.2019 | Year Ended 31.03.2018 |
|---|--------------------------|--------------------------|
| Schedule - 9 : : DONATIONS RECEIVED | | |
| " 1. From Foundation for Excellence Inc. (USA) | 9,03,07,732.50 | 8,63,36,111.49 |
| " 2. From Other Donors | 20,16,09,961.45 | 16,78,44,983.93 |
| " 3. Project Balances Brought Forward | | |
| a) Michael and Susan Dell Foundation | 33,60,418.00 | 7,70,807.00 |
| b) The Hans Foundation | 53,98,359.00 | 34,15,919.00 |
| c) A World Of Opportunity Foundation | 7,58,651.00 | 25,95,417.00 |
| | 30,14,35,121.95 | 26,09,63,238.42 |
| Less : Corpus Transferred to Balance Sheet | 7,07,751.00 | 44,42,551.00 |
| Less : Project Balances Carried Forward | | |
| a) Michael and Susan Dell Foundation (MSDF) | 46,93,285.18 | 33,60,418.00 |
| b) The Hans Foundation | 17,25,892.00 | 53,98,359.00 |
| c) A World Of Opportunity Foundation | 8,79,971.00 | 7,58,651.00 |
| NET INCOME | 29,34,28,222.77 | 24,70,03,259.42 |
| Schedule-10 : Interest Received | | |
| " Interest on Savings Bank A/c (FCRA) | 14,58,754.00 | 11,15,892.00 |
| " Interest on Savings Bank A/c (Non-FCRA) | 5,80,487.00 | 3,84,361.00 |
| " MSDF - Interest Earned A/c (FCRA) | 1,28,420.00 | 1,67,203.00 |
| " Hans - Interest Earned A/c (FCRA) | 1,24,345.00 | 2,43,496.00 |
| " Interest on Fixed Deposit (FCRA) | 18,19,070.00 | 18,47,868.00 |
| " Interest on Fixed Deposit (Non-FCRA) | 5,88,053.00 | 4,31,096.00 |
| " Interest on 8% GOI Bonds | 8,58,347.76 | 8,39,084.56 |
| " Interest on IT Refund | - | 16,367.00 |
| | 55,57,476.76 | 50,45,367.56 |
| Schedule-11 : Other Receipts | | |
| " Student Refund | - | 7,100.00 |
| " Previous Year Scholarship Refund | 19,700.00 | 1,20,000.00 |
| | 19,700.00 | 1,27,100.00 |
| Schedule-12 : Student Scholarship Payments | | |
| By FFE Scholarship - FCRA | 11,18,73,147.00 | 10,76,97,963.00 |
| " The Hans Foundation - Scholarship | 76,63,200.00 | 1,11,17,680.00 |
| " FFE Scholarship - Non FCRA | 11,72,29,198.00 | 8,83,54,829.00 |
| | 23,67,65,545.00 | 20,71,70,472.00 |
| Schedule-13 : Skill Training Cost | | |
| " Training Cost (Michael and Susan Dell Foundation) | 80,37,428.82 | 20,21,076.00 |
| " Skill Training Related Expenses | 2,27,185.00 | 10,52,947.00 |
| | 82,64,613.82 | 30,74,023.00 |

Schedules

Forming part of Financial Statements (Income & Expenditure) for the Year Ended 31st March, 2019 (Figures in Rupees)

| PARTICULARS | Year Ended 31.03.2019 | Year Ended 31.03.2018 |
|---|--------------------------|--------------------------|
| Schedule-14 : Employee Cost | | |
| " Salaries | 1,06,58,237.00 | 89,76,254.00 |
| " Employer Contribution EPF | 2,75,808.00 | 2,75,333.00 |
| " Gratuity Payments | 2,75,384.00 | 1,08,297.00 |
| " Staff Welfare Expenses | 4,80,369.00 | 5,18,162.00 |
| | 1,16,89,798.00 | 98,78,046.00 |
| Schedule-15 : Office Expense | | |
| " Electricity Charges | 52,809.00 | 41,603.00 |
| " Telephone Expenses | 2,78,021.00 | 3,52,853.26 |
| " Printing & Stationery | 55,639.00 | 73,446.00 |
| " Postage & Courier | 42,500.00 | 60,522.00 |
| | 4,28,969.00 | 5,28,424.26 |
| Schedule-16 : Travel Expenses | | |
| " Travel Expenses of Staff | 88,315.00 | 80,824.00 |
| " Travel Expenses of Board Member | 1,90,777.00 | 2,26,147.00 |
| | 2,79,092.00 | 3,06,971.00 |
| Schedule-17 : General Support Expenses | | |
| " Local Conveyance Expenses | 39,532.00 | 43,876.00 |
| " Repairs and Maintenance | 92,359.00 | 1,38,059.00 |
| " Computer Maintenance & Accessories | 1,49,853.00 | 2,26,558.00 |
| " Meeting Expenses | 1,875.00 | 7,828.00 |
| " Registration Fees | 1,000.00 | 4,236.00 |
| " Payment Gateway Charges | 60,656.78 | 51,352.00 |
| " Bank Charges | 29,759.22 | 29,068.58 |
| | 3,75,035.00 | 5,00,977.58 |
| Schedule-18 : Professional and Support Services | | |
| " Consultancy Charges | 1,35,658.00 | 84,060.00 |
| " Audit Related Expenses | 2,13,585.00 | 1,53,400.00 |
| " Legal Fees | 23,500.00 | 22,000.00 |
| " Professional Fees (Others) | 1,19,827.00 | 5,30,331.00 |
| " Technology Services | 16,36,929.00 | 17,34,947.24 |
| " Student Video Production | 9,80,000.00 | 8,65,000.00 |
| " Mentoring / Technology Cost | 1,59,300.00 | 10,90,321.00 |
| | 32,68,799.00 | 44,80,059.24 |
| Schedule-19 : Project Expenses | | |
| " The Hans Foundation | 23,09,404.00 | 36,03,486.00 |
| " Michael and Susan Dell Foundation (MSDF) | 24,30,400.00 | 33,13,516.00 |
| " True North LLP | 29,10,939.00 | 33,89,582.00 |
| " A World Of Opportunity Foundation (AWOO) | 6,28,680.00 | 5,13,166.00 |
| " Capgemini Exp (Publicity, Marketing, Events & Travel) | 5,25,757.00 | - |
| | 88,05,180.00 | 1,08,19,750.00 |

Schedule 19 - Notes

Forming Part of Accounts for the Year Ended 31st March, 2019

1. FFE INDIA TRUST is registered under Foreign Contribution (Regulation) Act, 1976 vide Registration Number 094421348.
2. The Trust has a FCRA Bank Account and all the foreign remittances are credited to this account.
3. During the financial year ended 31st March 2019, the Trust received Foreign Donations of Rs. 16,67,38,611.00 comprising of remittances from Foundation for Excellence Inc. USA amounting to Rs. 9,03,07,732.50 and Rs.7,64,30,878.50 from other Donors. The Trust has also received Rupee Donations amounting to Rs. 12,51,79,082.95 into the Non-FCRA Account.
4. During the Financial Year ended 31st March 2019, the total amount disbursed as Scholarships was Rs.23,67,65,545.00 comprising of Rs.11,95,36,347.00 from the FCRA Account and Rs. 11,72,29,198.00 from the Non-FCRA account.
5. Depreciation is calculated as per rates prescribed by Income-Tax Rules.
6. It is the policy of the Assesse to prepare its Financial Statements on cash receipts and disbursements basis. On this basis, revenue and related assets are recognized when received rather than when earned and expenses are recognized when paid rather than when the obligation is incurred.
7. Gratuity payments are accounted on payment basis.
8. The Fixed Assets are disclosed at actual cost less depreciation.
9. Since the Assesse follows the Cash System of accounting, revenue is recognized on receipt of income.

Schedule 5 - Fixed Assets

Forming Part of Accounts for the Year Ended 31st March, 2019

| PARTICULARS | W.D.V. as on 01.04.2018 | Additions before 30.09.2018 | Additions after 01.10.2018 | TOTAL as on 31.03.2019 | Depn. for the year | W.D.V. as on 31.03.2019 | Rate of Depn. |
|-----------------------------------|-------------------------------|-----------------------------------|----------------------------------|------------------------------|--------------------------|-------------------------------|---------------------|
| BLOCK - I | | | | | | | |
| Computer (FCRA) | 2,24,485.91 | 32,946.00 | 1,13,410.00 | 3,70,841.91 | 1,25,655.00 | 2,45,186.91 | 40% |
| Computer (Non-FCRA) | 24,401.76 | - | - | 24,401.76 | 9,761.00 | 14,640.76 | 40% |
| BLOCK - II | | | | | | | |
| Electrical Fittings (FCRA) | 1,03,057.10 | - | - | 1,03,057.10 | 10,306.00 | 92,751.10 | 10% |
| Electrical Fittings (Non-FCRA) | 26,914.29 | - | - | 26,914.29 | 2,691.00 | 24,223.29 | 10% |
| BLOCK - III | | | | | | | |
| Furniture and Fixtures (FCRA) | 2,77,551.80 | - | - | 2,77,551.80 | 27,755.00 | 2,49,796.80 | 10% |
| Furniture and Fixtures (Non-FCRA) | 51,209.60 | - | - | 51,209.60 | 5,121.00 | 46,088.60 | 10% |
| BLOCK - IV | | | | | | | |
| Office Equipments (FCRA) | 2,14,409.87 | 9,500.00 | 64,272.00 | 2,88,181.87 | 38,407.00 | 2,49,774.87 | 15% |
| Office Equipments (Non-FCRA) | 42,763.00 | 8,999.00 | - | 51,762.00 | 7,764.00 | 43,998.00 | 15% |
| TOTAL (FCRA) | 8,19,504.68 | 42,446.00 | 1,77,682.00 | 10,39,632.68 | 2,02,123.00 | 8,37,509.68 | - |
| TOTAL (Non-FCRA) | 1,45,288.65 | 8,999.00 | - | 1,54,287.65 | 25,337.00 | 1,28,950.65 | - |
| GRAND TOTAL | 9,64,793.33 | 51,445.00 | 1,77,682.00 | 11,93,920.33 | 2,27,460.00 | 9,66,460.33 | - |

Scholarship Program Statistics

By Type/Gender, By Academic Years (AY)

| SCHOLARSHIPS BY TYPE / GENDER | AY 2012-13 | | AY 2013-14 | | AY 2014-15 | | AY 2015-16 | | AY 2016-17 | | AY 2017-18 | | AY 2018-19 | |
|----------------------------------|------------|---------------|------------|---------------|------------|----------------|------------|----------------|------------|----------------|------------|----------------|------------|----------------|
| | No. | Amount | No. | Amount | No. | Amount | No. | Amount | No. | Amount | No. | Amount | No. | Amount |
| First Time Scholarships | 477 | 13,156,158.00 | 1169 | 33,985,000.00 | 1361 | 53,123,500.00 | 1199 | 60,572,200.00 | 1306 | 56,101,100.00 | 1,144 | 50,098,555.00 | 1,756 | 80,031,850.00 |
| Female Students | 131 | 3,617,587.00 | 208 | 6,115,000.00 | 229 | 8,830,000.00 | 254 | 11,158,900.00 | 267 | 11,549,900.00 | 243 | 9,917,675.00 | 486 | 20,547,790.00 |
| Male Students | 346 | 9,538,571.00 | 961 | 27,870,000.00 | 1132 | 44,293,500.00 | 945 | 49,413,300.00 | 1039 | 44,551,200.00 | 901 | 40,180,880.00 | 1,270 | 59,484,060.00 |
| Level Change | - | - | - | - | - | - | - | - | - | - | - | - | - | - |
| Female Students | - | - | - | - | - | - | - | - | - | - | - | - | - | - |
| Male Students | - | - | - | - | - | - | - | - | - | - | - | - | - | - |
| Renewal Scholarships | 0 | 32,414,251.00 | 1460 | 40,670,000.00 | 2053 | 57,205,250.00 | 2831 | 90,420,750.00 | 3580 | 135,316,367.00 | 3,802 | 157,071,917.00 | 3,666 | 156,733,695.00 |
| Female Students | 342 | 7,748,994.00 | 364 | 10,140,000.00 | 437 | 12,190,000.00 | 530 | 16,576,000.00 | 673 | 24,389,000.00 | 752 | 29,352,220.00 | 771 | 30,369,405.00 |
| Male Students | 1105 | 24,665,257.00 | 1096 | 30,530,000.00 | 1616 | 45,015,250.00 | 2301 | 73,844,750.00 | 2907 | 110,967,367.00 | 3,050 | 127,719,697.00 | 2,895 | 126,364,290.00 |
| TOTAL | 1924 | 45,570,409.00 | 2629 | 74,655,000.00 | 3414 | 110,328,750.00 | 4030 | 150,992,950.00 | 4886 | 191,377,467.00 | 4,946 | 207,170,472.00 | 5,422 | 236,765,545.00 |
| Female Students | 473 | 11,366,581.00 | 572 | 16,255,000.00 | 666 | 21,020,000.00 | 784 | 27,734,900.00 | 940 | 35,898,900.00 | 995 | 39,269,895.00 | 1,257 | 50,917,195.00 |
| Male Students | 1451 | 34,203,828.00 | 2057 | 58,400,000.00 | 2748 | 89,308,750.00 | 3246 | 123,258,050.00 | 3946 | 155,478,567.00 | 3,951 | 167,900,577.00 | 4,165 | 185,848,350.00 |



Scholarship Program Statistics

By Course, By Academic Years (AY)

| SCHOLARSHIPS | AY 2012-13 | | AY 2013-14 | | AY 2014-15 | | AY 2015-16 | | AY 2016-17 | | AY 2017-18 | | AY 2018-19 | |
|--|--------------|-----------------------|--------------|-----------------------|--------------|------------------------|--------------|------------------------|--------------|------------------------|--------------|------------------------|--------------|------------------------|
| BY COURSE | No. | Amount | No. | Amount | No. | Amount | No. | Amount | No. | Amount | No. | Amount | No. | Amount |
| Engineering/Technology | 1,576 | 3,81,06,131.00 | 2,185 | 6,21,10,000.00 | 2,837 | 9,19,19,750.00 | 3,293 | 12,43,38,750.00 | 4,010 | 15,81,65,567.00 | 3,956 | 16,87,58,887.00 | 4,212 | 18,75,77,300.00 |
| First year | 380 | 1,08,41,197.00 | 1,017 | 2,95,65,000.00 | 1,157 | 4,51,73,500.00 | 957 | 4,93,87,000.00 | 1,078 | 4,60,58,400.00 | 938 | 4,14,97,330.00 | 1,373 | 6,40,16,750.00 |
| Second or subsequent year | 1,196 | 2,72,64,934.00 | 1,168 | 3,25,45,000.00 | 1,680 | 4,67,46,250.00 | 2,336 | 7,49,51,750.00 | 2,932 | 11,21,07,167.00 | 3,018 | 12,72,61,557.00 | 2,839 | 12,35,60,550.00 |
| Integrated | - | - | - | - | 27 | 10,80,000.00 | 44 | 23,46,500.00 | 70 | 32,74,200.00 | 73 | 32,36,400.00 | 70 | 31,52,200.00 |
| First year | - | - | - | - | 27 | 10,80,000.00 | 15 | 12,98,500.00 | 26 | 11,39,400.00 | 1 | 40,000.00 | 20 | 8,00,000.00 |
| Second or subsequent year | - | - | - | - | - | - | 29 | 10,48,000.00 | 44 | 21,34,800.00 | 72 | 31,96,400.00 | 50 | 23,52,200.00 |
| Medical (MBBS) | 347 | 74,45,778.00 | 441 | 1,24,55,000.00 | 547 | 1,72,39,000.00 | 693 | 2,43,07,700.00 | 806 | 2,99,37,700.00 | 917 | 3,51,75,185.00 | 1,140 | 4,60,36,045.00 |
| First year | 96 | 22,74,961.00 | 150 | 43,60,000.00 | 177 | 68,70,000.00 | 228 | 98,83,700.00 | 198 | 86,13,000.00 | 205 | 85,61,225.00 | 363 | 1,52,15,100.00 |
| Second or subsequent year | 251 | 51,70,817.00 | 291 | 80,95,000.00 | 370 | 1,03,69,000.00 | 465 | 1,44,24,000.00 | 608 | 2,13,24,700.00 | 712 | 2,66,13,960.00 | 777 | 3,08,20,945.00 |
| Other Degree/Professional Courses | 1 | 18,500.00 | 3 | 90,000.00 | 3 | 90,000.00 | - | - | - | - | - | - | - | - |
| First year | - | - | 2 | 60,000.00 | - | - | - | - | - | 84.36 | - | - | - | - |
| Second or subsequent year | 1 | 18,500.00 | 1 | 30,000.00 | 3 | 90,000.00 | - | - | - | 15.64 | - | - | - | - |
| TOTAL | 1,924 | 4,55,70,409.00 | 2,629 | 7,46,55,000.00 | 3,414 | 11,03,28,750.00 | 4,030 | 15,09,92,950.00 | 4,886 | 19,13,77,467.00 | 4,946 | 20,71,70,472.00 | 5,422 | 23,67,65,545.00 |



Scholarship Program Statistics

By States, By Academic Years (AY)

| SCHOLARSHIPS BY STATES | AY 2012-13 | | AY 2013-14 | | AY 2014-15 | | AY 2015-16 | | AY 2016-17 | | AY 2017-18 | | AY 2018-19 | |
|---------------------------|--------------|----------------------|--------------|----------------------|--------------|-----------------------|--------------|-----------------------|--------------|-----------------------|--------------|-----------------------|--------------|-----------------------|
| | No. | Amount | No. | Amount | No. | Amount | No. | Amount | No. | Amount | No. | Amount | No. | Amount |
| Andhra Pradesh | 64 | 1,483,495.00 | 118 | 3,445,000.00 | 192 | 6,815,000.00 | 383 | 18,950,000.00 | 588 | 28,138,900.00 | 728 | 34,833,925.00 | 940 | 44,990,700.00 |
| Assam | 7 | 149,400.00 | 8 | 215,000.00 | 8 | 260,000.00 | 9 | 250,000.00 | 10 | 344,700.00 | 5 | 193,600.00 | 9 | 384,100.00 |
| Bihar | 13 | 325,656.00 | 68 | 2,030,000.00 | 145 | 5,065,000.00 | 180 | 6,890,300.00 | 227 | 8,921,100.00 | 215 | 9,028,420.00 | 211 | 9,525,000.00 |
| Chattisgarh | 18 | 417,320.00 | 35 | 1,035,000.00 | 42 | 1,405,000.00 | 58 | 2,413,000.00 | 69 | 2,756,500.00 | 65 | 2,839,300.00 | 74 | 3,216,700.00 |
| Delhi | 4 | 92,500.00 | 10 | 300,000.00 | 33 | 1,225,000.00 | 45 | 1,625,000.00 | 52 | 1,981,000.00 | 48 | 1,895,500.00 | 30 | 1,320,000.00 |
| Goa | 13 | 288,800.00 | 18 | 490,000.00 | 17 | 464,000.00 | 14 | 389,000.00 | 9 | 237,500.00 | 4 | 120,700.00 | 1 | 21,200.00 |
| Gujarat | 247 | 4,586,140.00 | 353 | 8,800,000.00 | 386 | 11,115,000.00 | 406 | 13,333,800.00 | 434 | 14,827,700.00 | 326 | 12,707,400.00 | 304 | 12,554,100.00 |
| Haryana | 7 | 185,000.00 | 10 | 300,000.00 | 15 | 530,000.00 | 19 | 703,000.00 | 31 | 1,260,500.00 | 33 | 1,280,700.00 | 51 | 2,113,700.00 |
| Himachal Pradesh | - | - | - | - | - | - | - | - | - | - | 2 | 80,000.00 | 4 | 160,000.00 |
| Jammu & Kashmir | 4 | 97,500.00 | 9 | 270,000.00 | 11 | 355,000.00 | 13 | 415,000.00 | 19 | 690,000.00 | 16 | 571,700.00 | 19 | 653,800.00 |
| Jharkhand | 11 | 278,206.00 | 34 | 995,000.00 | 68 | 2,395,000.00 | 94 | 3,615,000.00 | 121 | 4,791,300.00 | 119 | 4,957,500.00 | 121 | 5,670,800.00 |
| Karnataka | 341 | 8,495,205.00 | 463 | 13,397,500.00 | 580 | 18,253,750.00 | 663 | 22,681,550.00 | 761 | 28,057,200.00 | 782 | 33,740,660.00 | 830 | 38,327,255.00 |
| Kerala | 26 | 595,420.00 | 39 | 985,000.00 | 45 | 1,340,000.00 | 70 | 2,235,000.00 | 90 | 3,108,000.00 | 96 | 3,572,100.00 | 117 | 4,432,600.00 |
| Madhya Pradesh | 52 | 1,203,570.00 | 63 | 1,825,000.00 | 87 | 2,925,000.00 | 86 | 3,265,000.00 | 89 | 3,464,500.00 | 84 | 3,478,600.00 | 72 | 3,476,900.00 |
| Maharashtra | 165 | 4,098,422.00 | 175 | 5,105,000.00 | 195 | 6,818,500.00 | 240 | 8,948,400.00 | 291 | 11,238,900.00 | 366 | 14,787,973.00 | 396 | 17,024,250.00 |
| Manipur | 31 | 733,225.00 | 50 | 1,460,000.00 | 53 | 1,635,000.00 | 49 | 1,460,000.00 | 47 | 1,532,900.00 | 32 | 1,117,100.00 | 21 | 771,600.00 |
| Nagaland | - | - | - | - | - | - | - | - | 7 | 280,000.00 | 5 | 159,700.00 | 5 | 167,900.00 |
| Odisha | 355 | 8,605,250.00 | 344 | 9,840,000.00 | 309 | 9,545,000.00 | 258 | 9,555,000.00 | 271 | 10,741,267.00 | 220 | 9,275,067.00 | 192 | 8,452,995.00 |
| Punjab | 3 | 80,000.00 | 9 | 270,000.00 | 23 | 825,000.00 | 38 | 2,005,400.00 | 38 | 1,990,100.00 | 6 | 262,400.00 | 22 | 1,434,400.00 |
| Pondicherry | - | - | 1 | 30,000.00 | 2 | 70,000.00 | 3 | 153,200.00 | 7 | 330,000.00 | 33 | 1,856,700.00 | 4 | 209,100.00 |
| Rajasthan | 8 | 215,000.00 | 15 | 450,000.00 | 38 | 1,395,000.00 | 47 | 1,820,000.00 | 54 | 2,100,000.00 | 67 | 2,671,700.00 | 75 | 3,794,400.00 |
| Tamil Nadu | 318 | 7,777,555.00 | 440 | 12,542,500.00 | 548 | 16,942,500.00 | 600 | 20,247,700.00 | 680 | 24,110,100.00 | 693 | 25,862,157.00 | 872 | 32,632,445.00 |
| Tripura | - | - | - | - | 2 | 80,000.00 | 1 | 40,000.00 | 2 | 80,000.00 | 3 | 120,000.00 | 2 | 80,000.00 |
| Telangana | - | - | - | - | 91 | 3,275,000.00 | 143 | 7,800,100.00 | 281 | 13,797,200.00 | 361 | 16,314,330.00 | 404 | 18,548,500.00 |
| Uttarakhand | 46 | 1,222,402.00 | 60 | 1,777,500.00 | 127 | 4,527,500.00 | 199 | 7,362,500.00 | 224 | 8,558,900.00 | 184 | 7,579,300.00 | 177 | 6,987,800.00 |
| Uttar Pradesh | 62 | 1,564,400.00 | 108 | 3,240,000.00 | 132 | 4,325,000.00 | 150 | 5,649,500.00 | 202 | 7,676,500.00 | 232 | 9,097,680.00 | 242 | 10,688,200.00 |
| West Bengal | 129 | 3,075,943.00 | 199 | 5,852,500.00 | 265 | 8,742,500.00 | 262 | 9,185,500.00 | 282 | 10,362,700.00 | 221 | 8,766,260.00 | 227 | 9,127,100.00 |
| TOTAL | 1,924 | 45,570,409.00 | 2,629 | 74,655,000.00 | 3,414 | 110,328,750.00 | 4,030 | 150,992,950.00 | 4,886 | 191,377,467.00 | 4,946 | 207,170,472.00 | 5,422 | 236,765,545.00 |

INDIA

Foundation for Excellence India Trust
No. 840, MHT House, 1st Floor
5th Main, Indiranagar 1st Stage
Bengaluru 560 038

Phone: +91 (080) 2520 1925

Email: india_support@ffe.org

Website: <https://ffe.org>



USA

Foundation For Excellence,
526 W Fremont Ave, #2920,
Sunnyvale, CA 94087

Phone: +1 (408) 985-2001

Email: us_support@ffe.org

